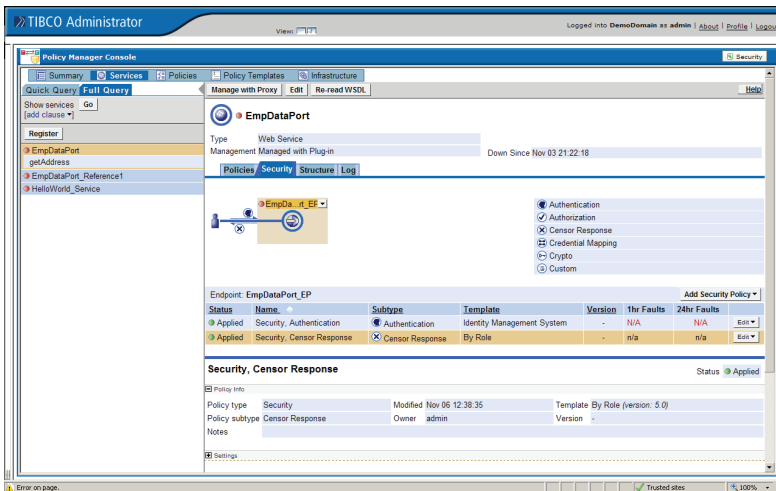


# TIBCO ActiveMatrix Policy Manager

With service-oriented architecture (SOA), applications are composed out of reusable services built with different technologies that run on different machines. This makes deployment and management challenging. Implementing security, auditing, and logging; maintaining uptime; and meeting service level agreements are often performed differently on each platform and hard coded. Not only does this result in more development work. These differences make the services harder to change, reuse, and manage.

TIBCO ActiveMatrix™ Policy Manager enables organizations to centrally define policies for security, auditing, logging, and service level agreements. It separates a service's business logic from these policies and replaces policy hard-coding with more flexible rules. This separation allows organizations to apply policies uniformly across all services regardless of location or underlying technology such as Java or .NET. It also means companies can implement security, regulatory requirements, and service level agreements much faster than before because changes are no longer required to the existing applications. This results in much greater flexibility, lower costs, and the ability to deliver applications that are driven by the rules of the business.



*TIBCO ActiveMatrix Policy Manager provides a more flexible and cost-efficient way of implementing security and meeting regulatory requirements and service level agreements by separating the definition and enforcement of these policies from the services themselves.*

## AT A GLANCE

TIBCO ActiveMatrix Policy Manager enables companies to centrally define policies for security, auditing, logging and service level agreements as rules and to enforce policies consistently across services built on Java and .NET or in custom and packaged applications.

## BENEFITS

- ‡ Enables business and IT service level, regulatory, or security requirements to be rapidly implemented as rules without requiring changes to existing service-oriented applications.
- ‡ Increases service flexibility by replacing rigid code with rules-based policy management.
- ‡ Promotes service reuse by allowing the same services to have different policies for different consumers.
- ‡ Increases control over service infrastructure and reduces risk by consistently enforcing policies such as security, auditing, logging, and routing across services.
- ‡ Ensures that business and IT service level agreements are met by applying and enforcing rules-based service-level policies across services.
- ‡ Reduces complexity in development and operations by providing a complete governance solution across Java, .NET, legacy, and packaged applications.

